

COMUNE DI MARSALA
PROVINCIA DI TRAPANI

LAVORI DI MANUTENZIONE STRAORDINARIA
PER L'ESECUZIONE DI OPERE EDILI E PER
L'ADEGUAMENTO SISMICO E FUNZIONALE
DELLO STADIO MUNICIPALE DI MARSALA

R.U.P.

Ing. Luigi Palmeri

Tav. 19

Particolare - 1 -

Scala 1:50

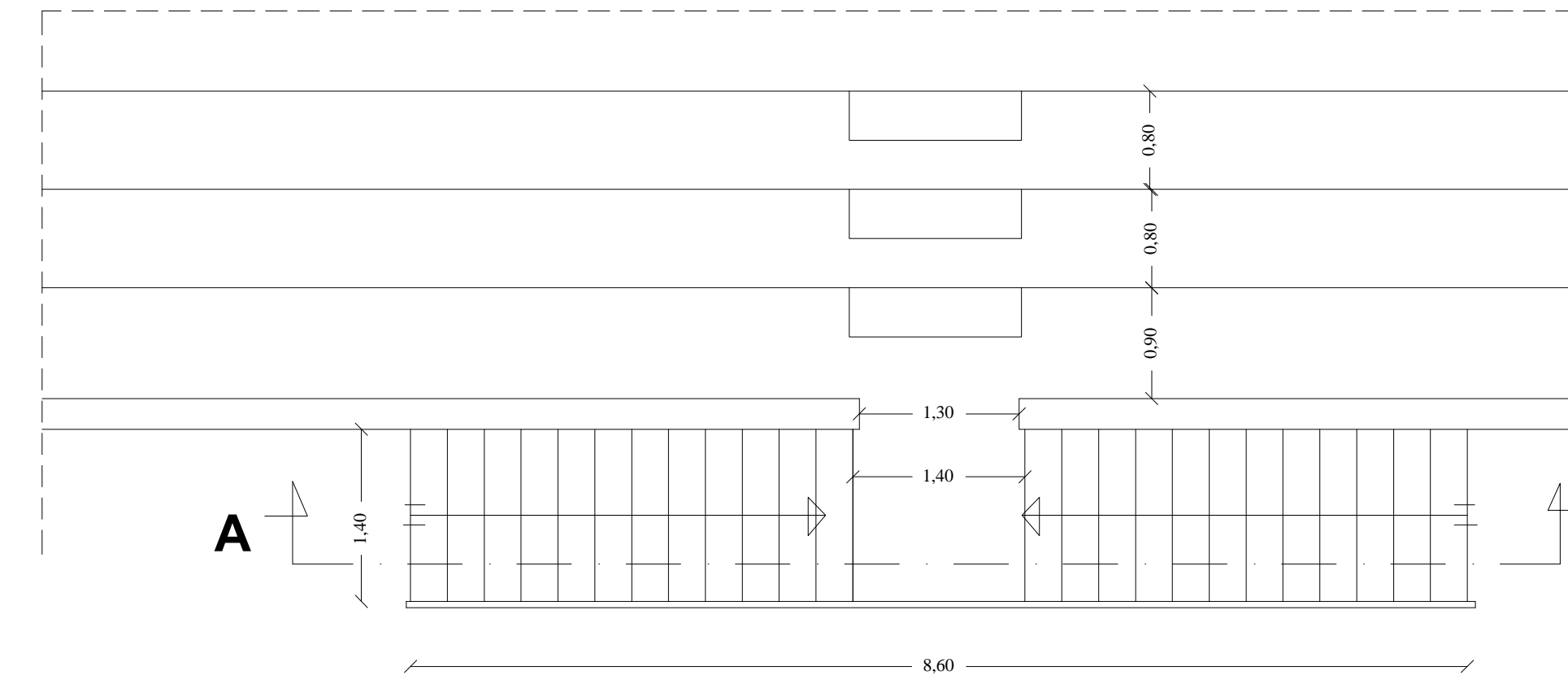
PROGETTISTA

Arch. Giuseppe Barraco

Marsala, li

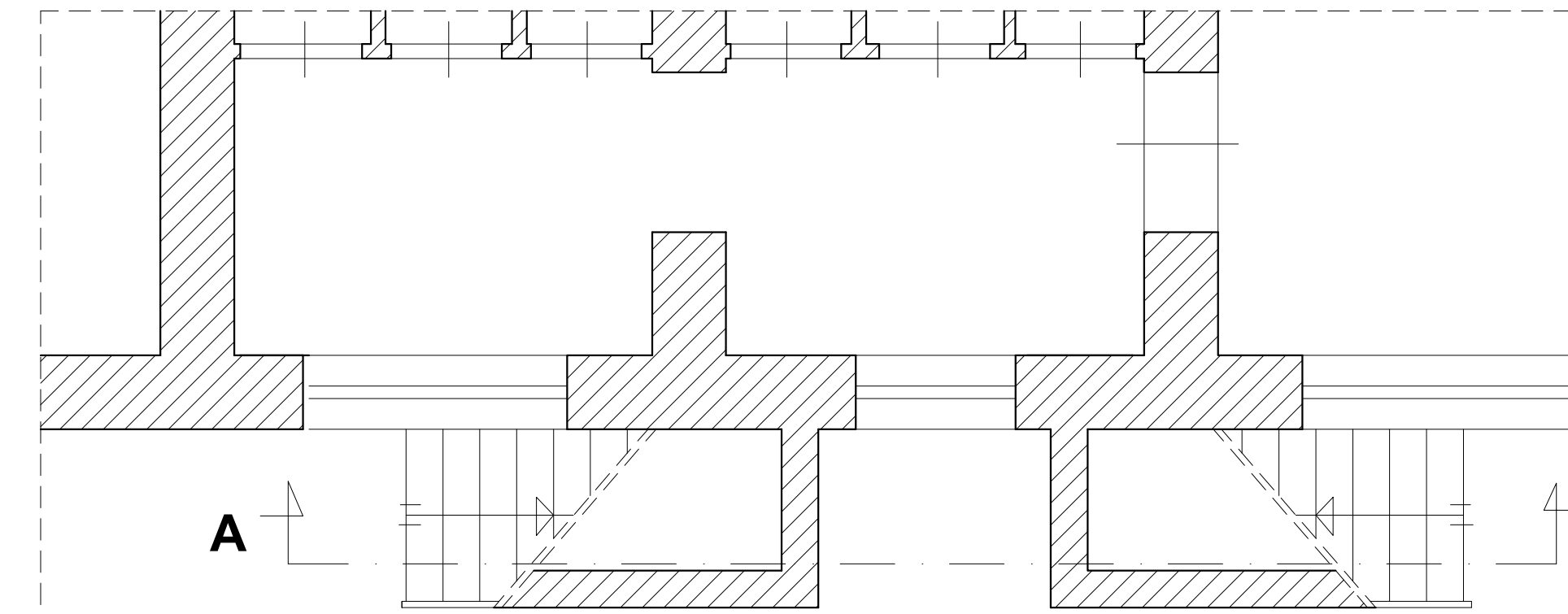
Comunicazioni al tecnico: Via F.sco Struppa, n.45 - 91025 Marsala tel./fax. 0923-716104
email: archgiuseppebarraco@libero.it

PART. 1

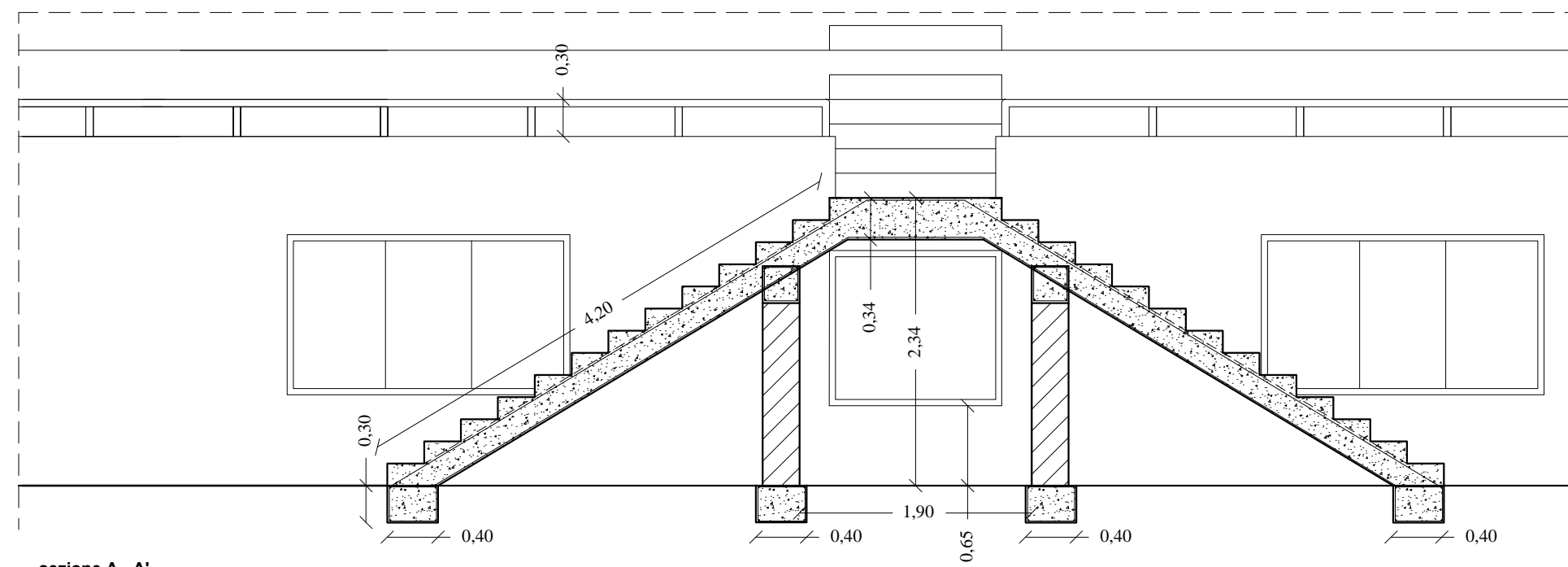


vista dall'alto

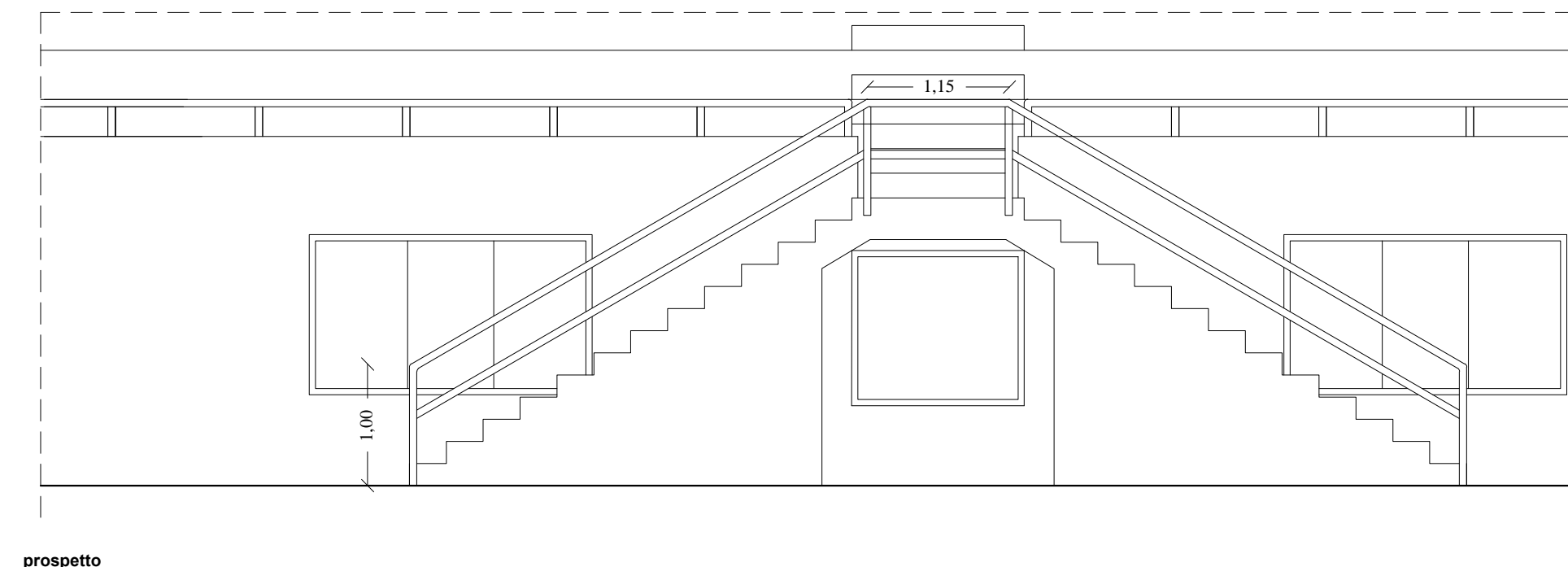
particolare scala doppia
stato attuale



pianta

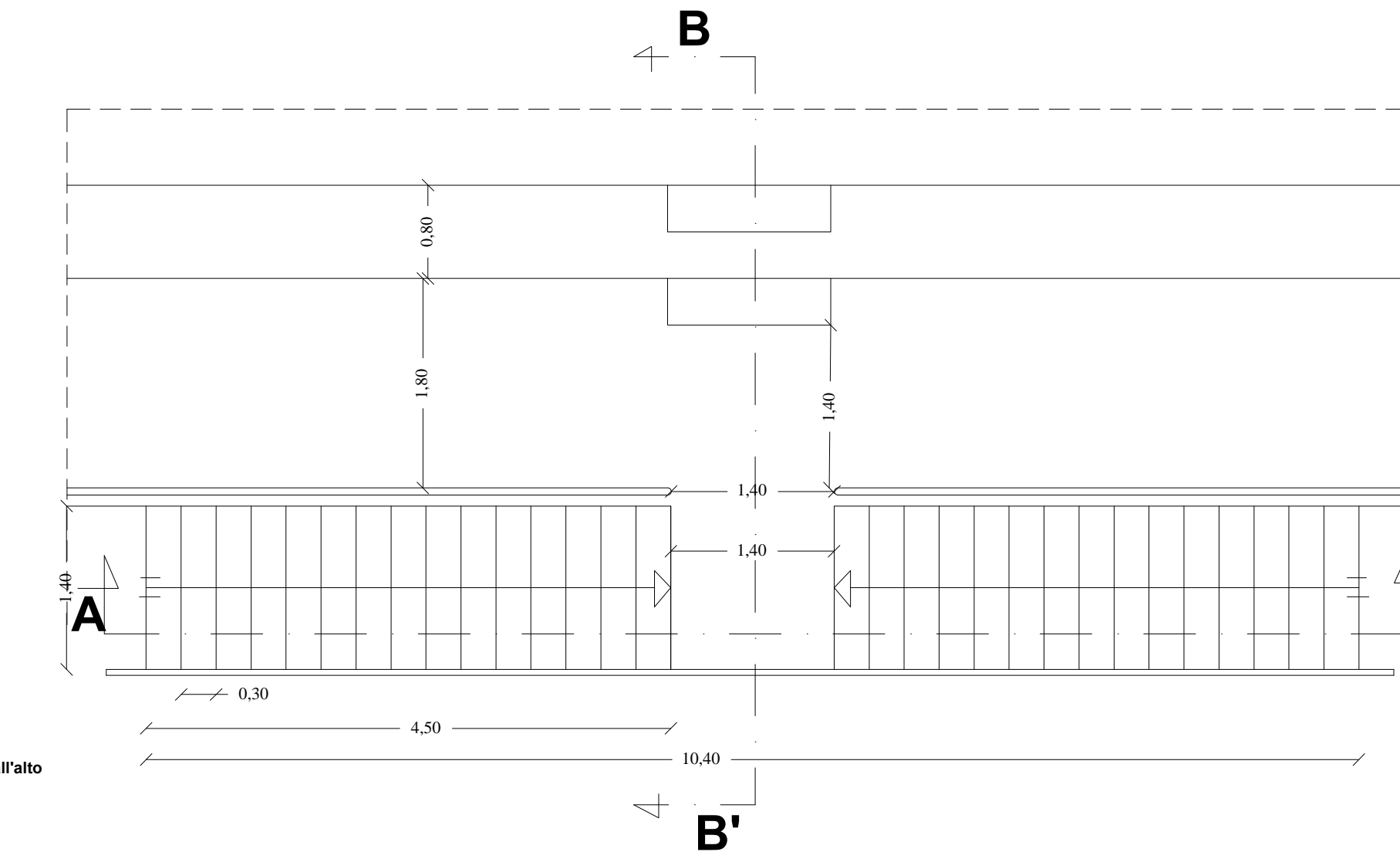


sezione A - A'

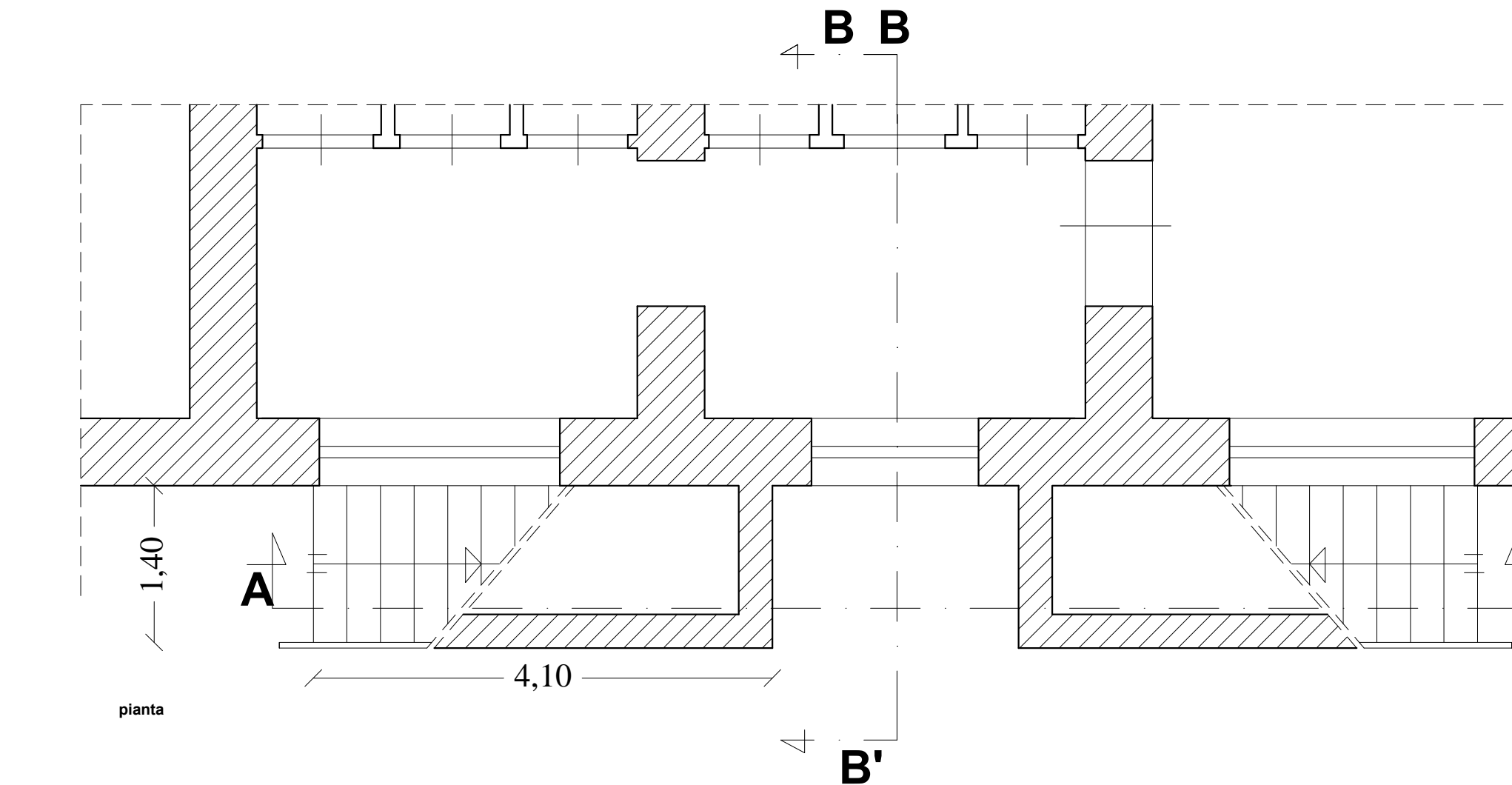


prospetto

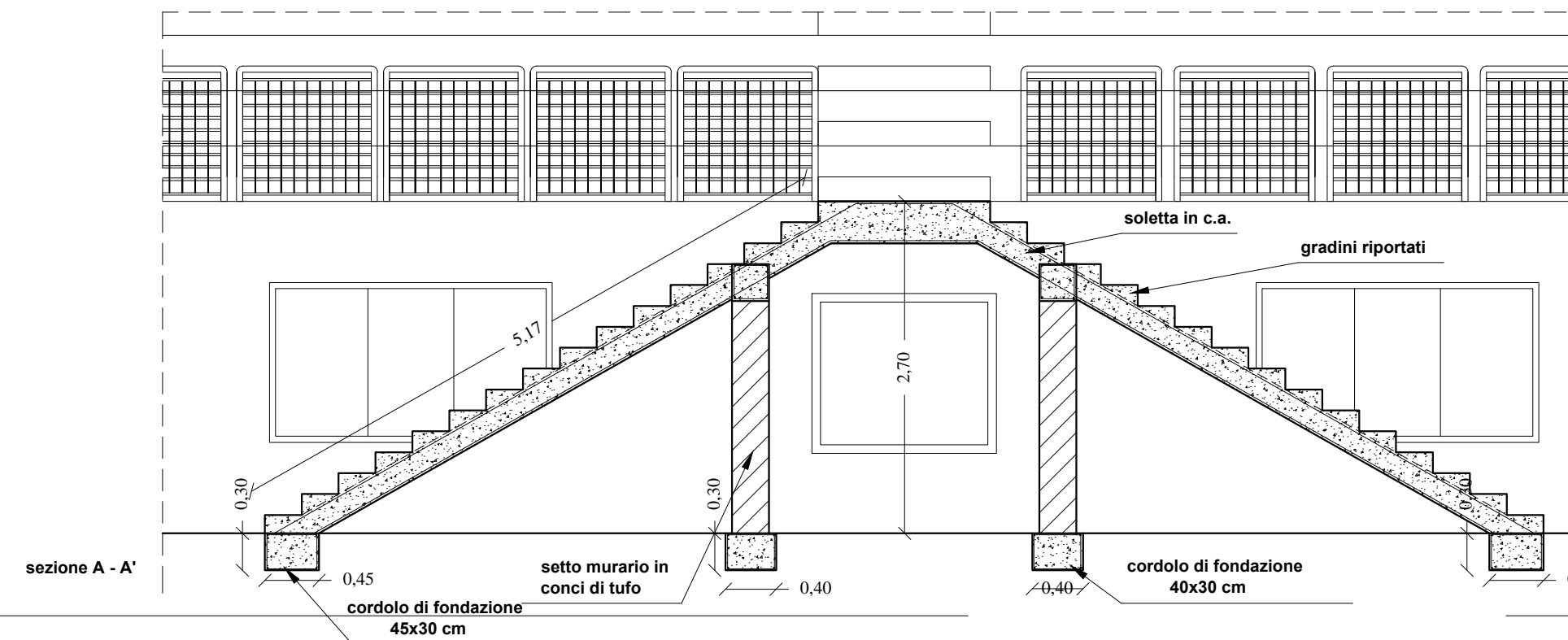
particolare scala doppia
stato futuro



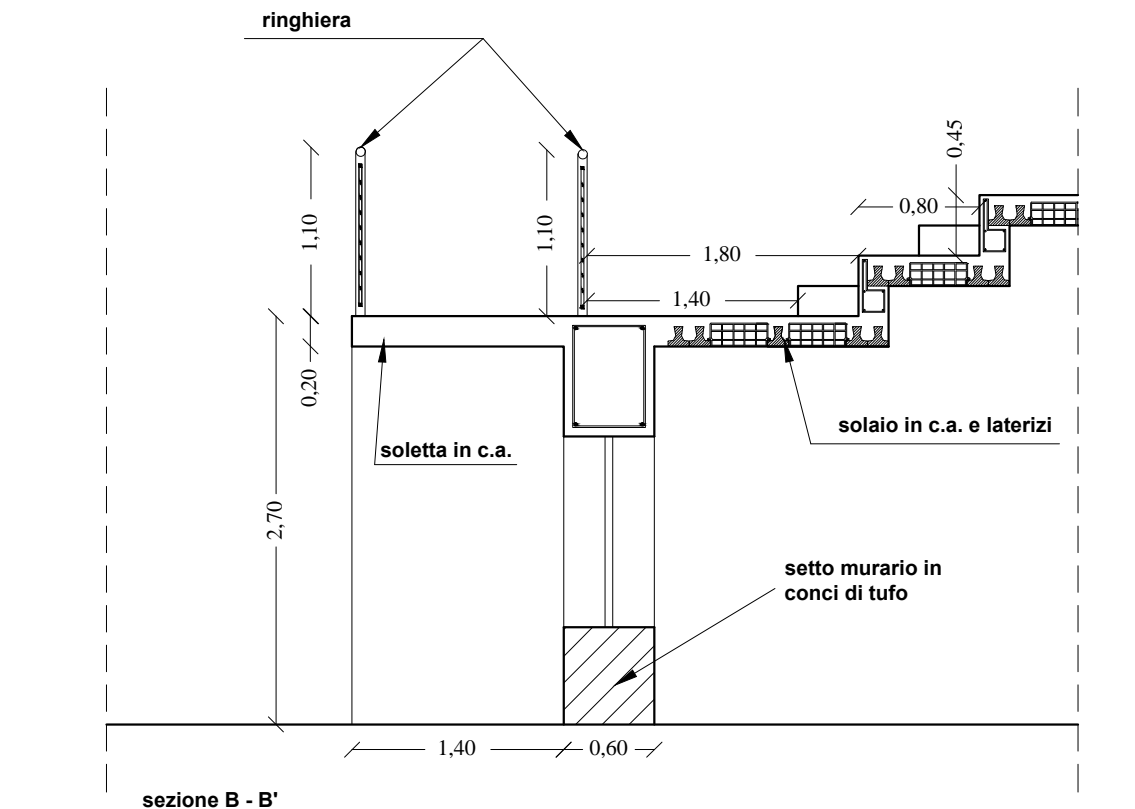
vista dall'alto



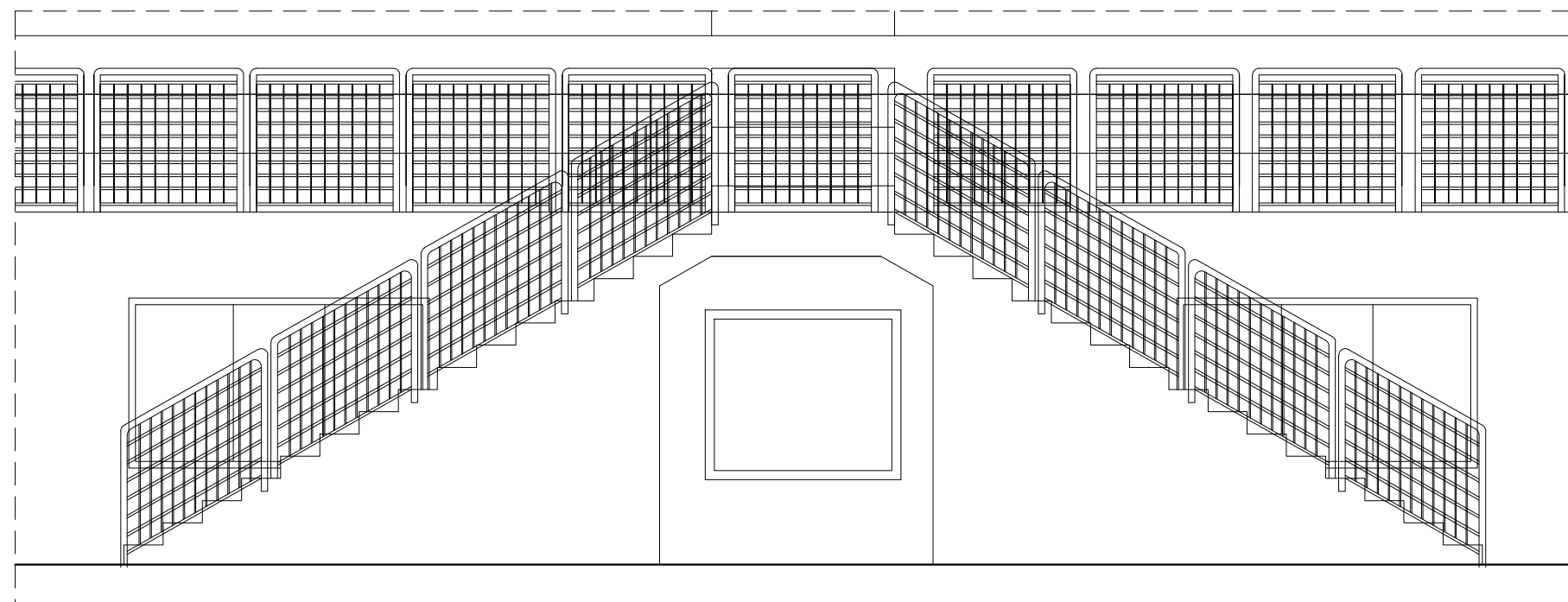
pianta



sezione A - A'



sezione B - B'



prospetto